

TO DO LIST!

- ✓ Support Equitable Learning
- ✓ Overcome the tech challenges
- ✓ Elevate student collaboration
- ✓ Increase technological reliability
- ✓ Enable multiple classroom layouts

ARTOME S1



CREATING FLEXIBLE LEARNING SPACES



**SCREEN SIZE
MATTERS**

IMAGE SIZE UP TO 120"

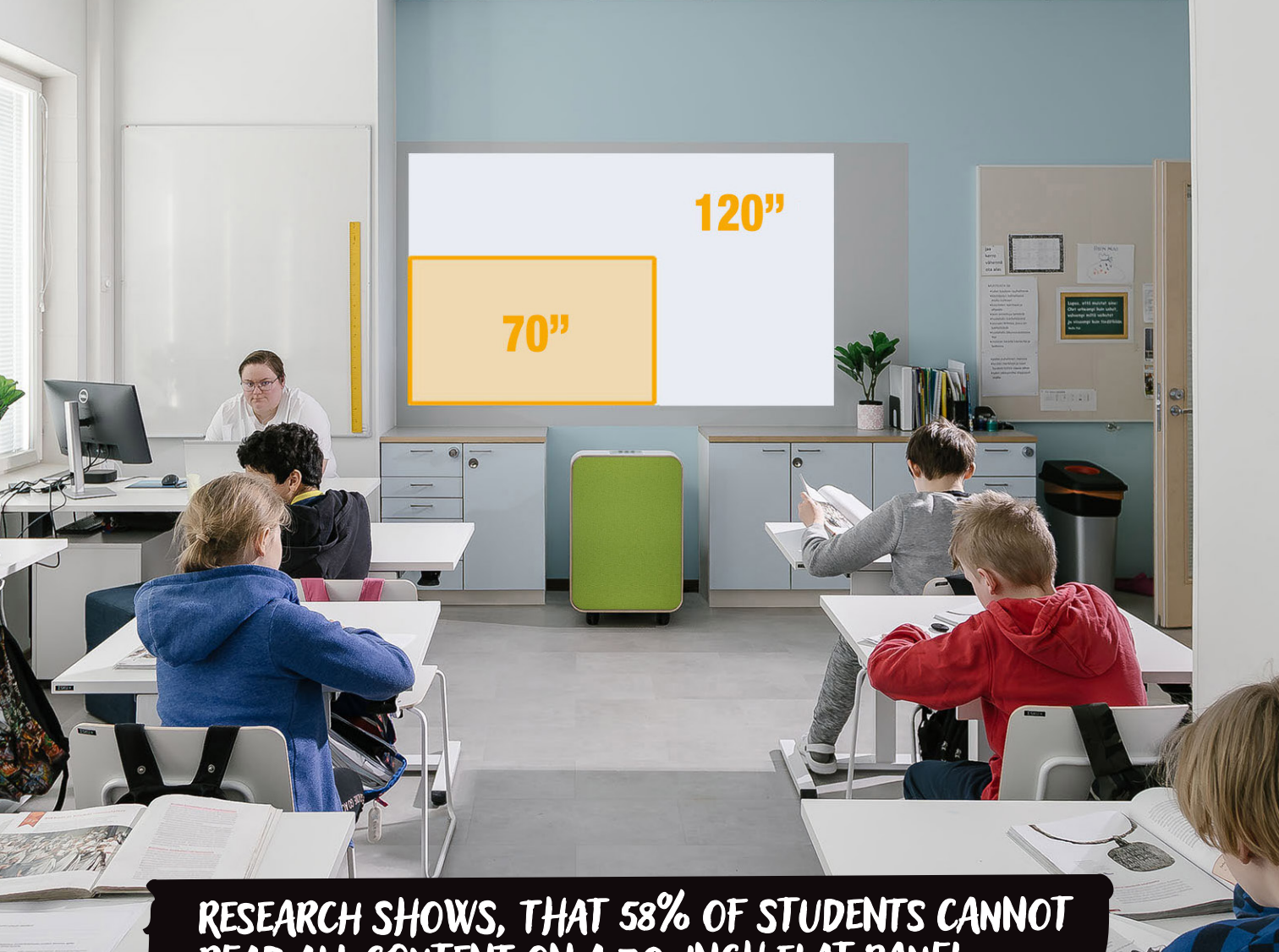
Unlocking the potential of people

Flexible and easy-to-use technology

Teachers best friends in making memorable learning experiences are the teaching materials that are being used in the classroom. Flexible and easy-to-use audiovisual technology can transform the classroom into a more vivid space. It's easy to create gamification formats by using different platforms and presenting them with a big picture that can be easily seen from the back row as well. And why stop there? With the help of images and video combined with high-quality sound, it is possible to create immersive learning experiences that will take the class to a desert to learn about how sandstorms are being born or dive into the bottom of the ocean to explore life under water.

Supporting Equitable Learning

A small screen in the classroom may not provide an equitable experience for all students. This is where the Artomen S1 comes into play, capable of easily projecting an image over 100 inches in size, ensuring that every student, regardless of their seating position, has a clear view of the information being presented. We believe that every child deserves an equal chance to see what is being taught, and we want to support schools in building more inclusive and caring learning environments.



RESEARCH SHOWS, THAT 58% OF STUDENTS CANNOT READ ALL CONTENT ON A 70-INCH FLAT PANEL

Leading 70-inch class 4k resolution flat panel in a 22' (width) by 27' (depth) classroom-style arrangement. When asked to copy down six short items of information from slides being displayed, 58% of students ages 12-22 copied at least one item incorrectly. Based on U.S. research conducted by Radius Research.

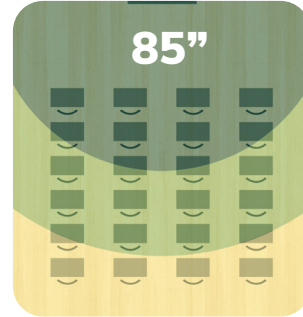
Maximizing Learning with the 4/6/8 Rule

In audio visual (AV) installations, the common standard used for determining screen size known as the 4/6/8 rule. This rule establishes that ideal viewing distance, in correlation with room size, should be four, six or eight times the height of the screen for analytical viewing, basic viewing and passive viewing.



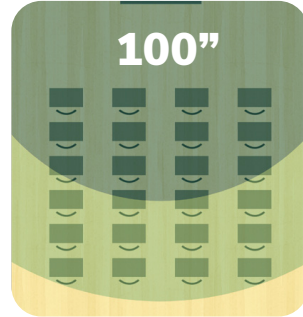
Text & detailed information

Analytical Viewing Area
Maximum 4X Vertical Display Height



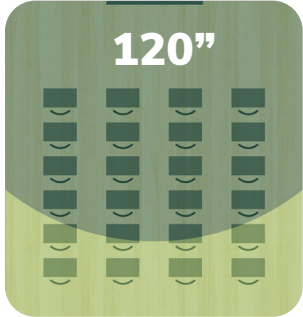
Basic presentations

Basic Viewing Area
Maximum 6X Vertical Display Height



Movies & videos

Passive Viewing Area
Maximum 8X Vertical Display Height



Source: AVIXA V202.01:2016. Display Image Size for 2D Content in Audiovisual Systems. Example images created with Epson 4/6/8 Rule Simulator.

Unlocking the potential of spaces

ENABLING MULTIPLE CLASSROOM LAYOUTS

Flexible technology enables dynamic learning environments

Artome S1 makes it easier for you to create multiple classroom layouts effortlessly with a movable, installation-free AV solution. Transform any room into various educational environment, enhancing possibilities in your teaching approach and providing students with dynamic and engaging learning experiences. Whether you want to facilitate group collaboration, simultaneously teach individualized classes, or convert the classroom into a presentation space for a parent-teacher meeting, Artome S1 ensures your space is always ready to adapt to your needs, enabling the transformation of the classroom layout to support versatile pedagogical practices and classroom dynamics.



Same space,
different layouts

Unlocking the potential of technology

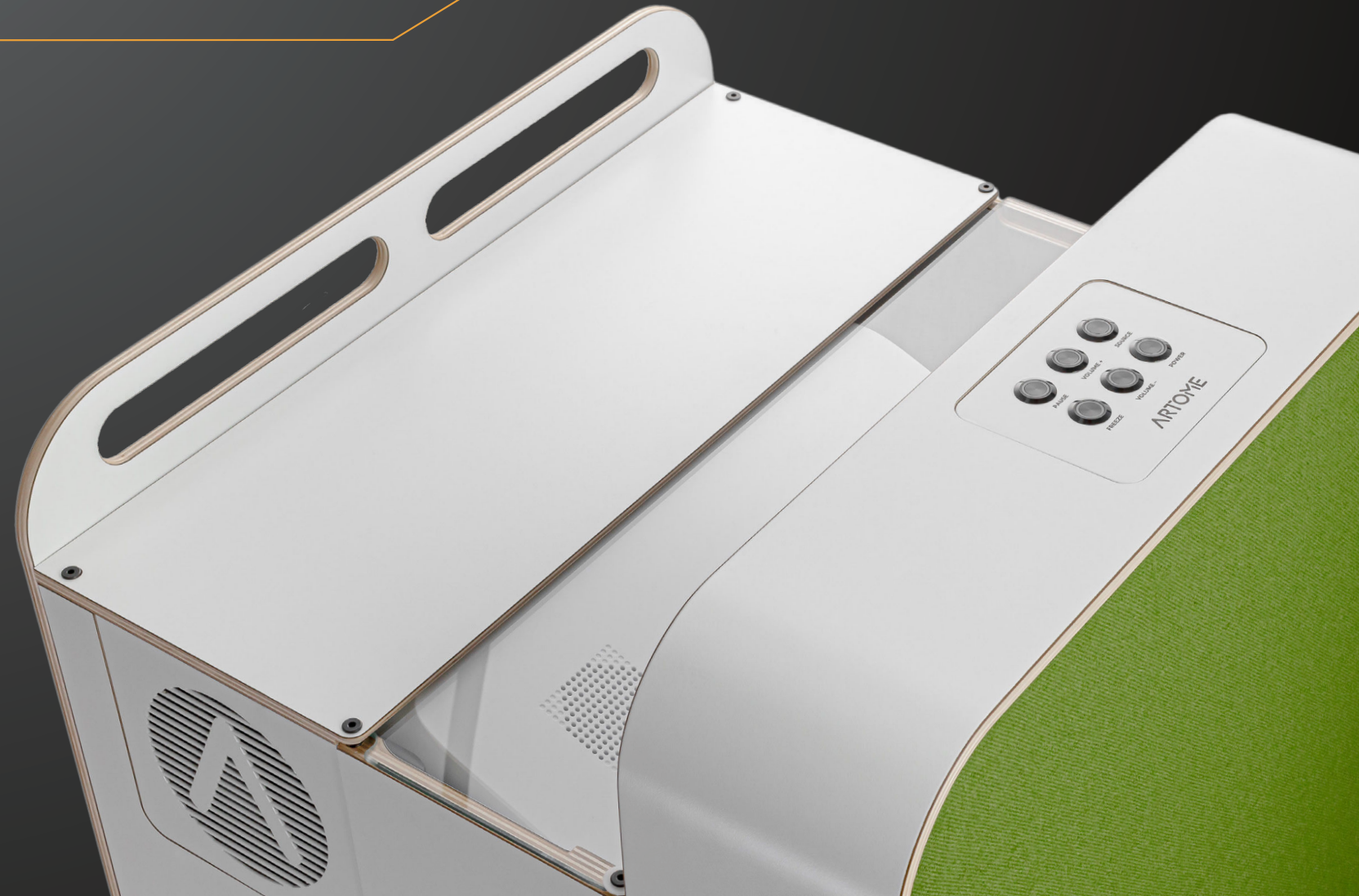
- 1 Plug the power cord into the outlet
- 2 Plug in HDMI or connect wirelessly
- 3 Roll the Artome to adjust image size

Overcoming the tech challenges

Fighting with technology even for 5 minutes at the beginning of every 45-minute lecture is not only frustrating but also reduces valuable learning time. Imagine this happening daily; by the time a 9th grader would finish that school year, he or she could overall miss out on nearly a year's worth of study time due to tech inefficiencies. With factory-made AV integration, Artome S1 guarantees compatibility, functionality, and user-friendliness, providing a seamless learning experience that not only enhances education but also saves time, money, and headaches with tech.

Increasing technological reliability

Imagine a scenario where the classroom tech experiences an unexpected malfunction during an important lecture or presentation. With Artome S1 as your backup, you have a reliable solution ready to roll – literally, since Artome has wheels. Its mobility makes it possible to swiftly replace your malfunctioning equipment and resume your educational activities without missing a beat.





FOR THE TECH PEOPLE

General specs

Name	Artome S1
Materials	Birch plywood, MDF, steel, aluminum, fabric (PES)
Dimensions	(W x H x D) 52 x 81 x 48,5 cm / 20,47" x 31,88" x 19,09"
Warranty (excl. projector)	24 months (option to extend up to 60 months)

Technical specs

Supply Voltage	100-240V~ 50/60Hz
Sound	2.1 -speaker system
Operating temperature	0-30 °C / 32-86 °F
19" rack	3U x 280 mm / 11" (depth)
Controls	Power, Source, Vol +/-, Pause, Freeze, Mic gain
Connections for users	HDMI 1, HDMI 2, Mic in x2, Power outlet (100-240V~ 50/60Hz)
Connections for integrators	HDMI 3 (M2M), RS-232, 3,5 mm audio jack, LAN

Projector specs

Compatible projectors	Epson: EB-770F / 775F / 760W
Brightness	4100 lm
Resolution	EB-770/775F Full HD, EB-760W HD Ready
Aspect ratio	16:9
Recommended image size	90-120"
Warranty	36 months



ECF T +61(3) 9818 5444 E info@ecf.com.au
 HFA T +61(3) 9818 8400 E info@hfa.com.au
 F +61(3) 98186 655
 1F Marine Parade Abbotsford Victoria 3067 Australia

ecf.com.au
 hfa.com.au
 ecf.hfa
 @ecf_hfa

