

ecf | ZGO MONITOR ARM



ZGO MONITOR ARM

With its innovative design and cutting edge technology, zgo sets a precedent in bringing an ergonomic experience to discerning users. It has highly flexible adjustments to fit you comfortably. Simple installation and high adaptability with different monitors are further testaments to its design with you in mind.



DIMENSIONS

Height	Width	Depth
Various	Various	Various

SPECIFICATIONS

Numerous display mount with interchangeable options
 Dynamic arm supports 3-11kg
 Spring adjustment
 Concealed cables
 Articulation- verticle adjustment $+35^{\circ}/-35^{\circ}$
 180° lockout to protect walls and screens
 Screen vesa mount 75mm & 100mm

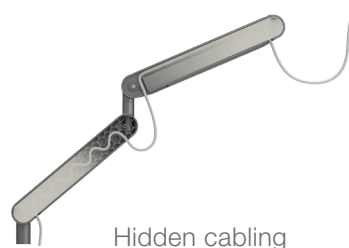
OPTIONS

Z Twin dual monitor bar, supports two monitors up to 24 inches each
 Supported Monitor sizes: 19, 20, 22, 24, 27, 30 inch
 Side-panel colour options:
 Black, Red, Blue, Orange, Green
 Arm colour options: Metallic silver or Pearl white
 Sliding clamp for table thickness 21-28mm or
 Universal clamp for table thickness 18-60mm

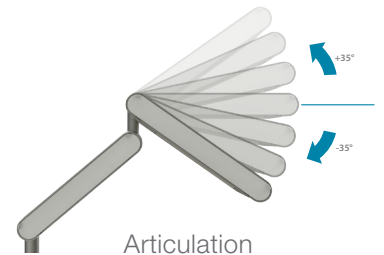
GENERAL

Origin	Lead Time
Australia	3 weeks

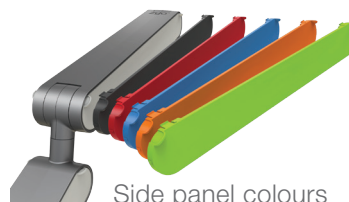
TECHNICALS



Hidden cabling



Articulation



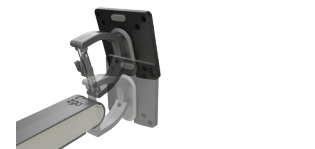
Side panel colours



Arm colour options



Laptop size



Computer size

PRODUCT OPTIONS



ecf



1F Marine Parade
 Abbotsford, Victoria
 3067 Australia

T +61 (3) 9818 5444
 F +61 (3) 9818 6655
 info@ecf.com.au

ecf.com.au
 ecf.hfa
 @ecf_hfa

